

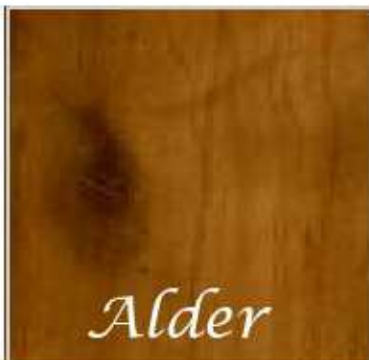


Wood Species

Wood Species



BIRCH is a medium density wood species with a distinct, moderate grain pattern that ranges from straight to wavy or swirl. The predominant sapwood color is white to creamy yellow, while the heartwood varies in color from medium or dark brown to reddish brown.



ALDER is a fast growing species that is growing in popularity primarily because of its dense grain structure that takes finishes extremely well. Alder has almost the same grain and color characteristics of Cherry. Color consistency is better than that of

Professionally Crafted Cabinets

PULL OUT

Pullout function allows for accessibility and visibility on both sides.



DISHWARE ORGANIZER

Revolutionize the way you store your pots, pans, and lids. This unit accommodates a variety of cookware sizes and brands.



Blind Corner Pull Out

Maximizes Space For Blind Corner Cabinets



TRASH ORGANIZER

Two large and easily accessible trash containers for convenient recycling.



PULL OUT ORGANIZER

Everything is within reach with these pull out drawers.



DRAWER ORGANIZER

Divider panels can be moved and arranged to organize your utensils and gadgets.



ROLL OUT SINK TRAY

Make use of previously unusable storage space under the sink.





Cabinet Construction

Cabinet Construction

The details make the difference

Our hinges offer 6-way adjustment flexibility.



Our solid wood drawer box features dovetail construction for superior strength and durability.

Drawers made of solid wood.

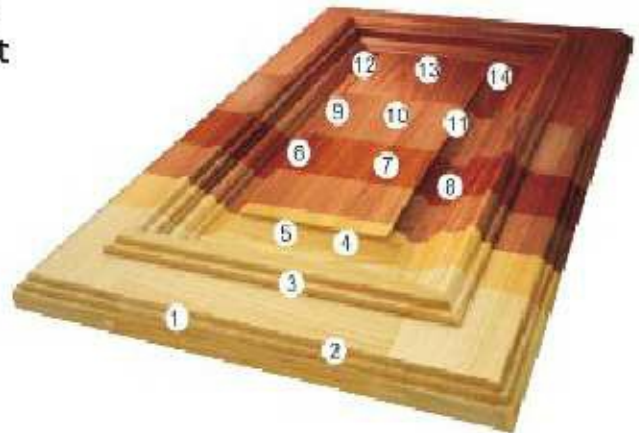


Our 9/16" thick shelves are fully adjustable for increased storage possibilities.

Professionally Crafted Cabinets

14-Step Finishing Process

1. First, we select the finest Chinese maple, birch or alder solid wood to build our cabinetry.
2. All surfaces are progressively sanded smooth with fine sandpaper on a manual sanding line to provide a smooth and consistent finish.
3. After sanding, surfaces are vacuumed to eliminate all dust particles and each door is quality-inspected prior to finishing.
4. Equalizer stains are simultaneously applied to balance the color and grain.
5. A deep penetrating stain is then applied to reveal the hidden beauty of the wood grain.
6. Spray the base color.
7. All surfaces are hand-sanded again, providing a smooth surface for your selected cabinetry.
8. Spray the base color again, and sanding as well. The surfaces are inspected for color correctness and quality.
9. Toner is adopted to establish consistent color.
10. All surfaces are then evenly hand-rubbed and wiped clean of excess stain.
11. The product is slowly air-dried and inspected for color.
12. Environmentally safe top coat provides maximum resistance to scuffing, dents, moisture and common household chemicals or agents.
13. The final products are personally quality-inspected to maintain a consistent gloss level.
14. Before shipping, we inspect all of the products thoroughly to assure the quality that we expect and our customers demand.



Professionally Crafted Cabinets

Cabinet Construction Specifications

Doors and Drawers Fronts: The Doors and drawer fronts in the Classic series are constructed of solid Alder wood. Alder is known for the beauty of its grain as well as its durability. First, the finest Alder wood is selected for the cabinetry, and then a 14 step finishing process is performed. Giving the cabinetry an exquisite finish to last for years to come.

Bristol Series: The 5 piece full overlay door has a solid $\frac{5}{8}$ " thick Raised center panel set in an attractive mitered corner frame. The $\frac{3}{4}$ " x 3" Mitered frame has mortise and tendon joints which only add to the exceptional craftsmanship of these cabinets. The drawer front is a 5 piece mitered frame with recessed panel that completes the ensemble.

Hinges: 6-way adjustable hinges are standard on all cabinets, hinges open 110 degrees. Bristol Cherry and Oatmeal include soft close mechanism .

Drawers: The designer series includes $\frac{5}{8}$ " solid birch sides with a $\frac{3}{8}$ " plywood bottom. All drawer are skillfully dovetailed to give them a strong construction. Bristol cherry and Oatmeal Drawers have zinc under mount rollers with soft close mechanism.

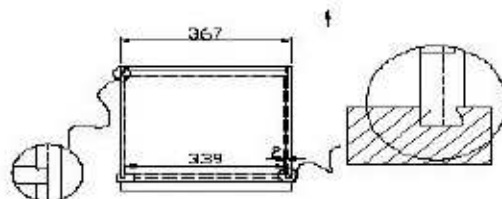
Shelving: $\frac{9}{16}$ " Shelving select birch veneer plywood with matching wood veneer edge banding is used on all wall and base cabinet applications. The Adjustable shelving is supported by a nickel plated shelf clip.

Backs, Tops, Bottoms: $\frac{9}{16}$ " thick Birch veneer plywood sides that have dovetail engineered system that locks the plywood to the face frame for an amazingly strong union .

Face Frames: $\frac{3}{4}$ " x $1\frac{1}{2}$ " solid Wood Stiles and rails Are joined with glue and dowels. Backs of face frames are dovetail grooved to accept side panels. The Face fame is engineered so that the bottom of all bases and wall cabinets are flushed with the top inside edge of the face frame creating a custom look.

Toe kicks: $\frac{3}{4}$ " X $4\frac{1}{2}$ " Solid birch toe kick is Added to each assembled cabinet and stained to match along with the edges. Additional 8" length's $\frac{1}{4}$ " plywood toe kicks are available for those who do not wish to see the joint in the cabinets.

Dovetail detail that secures the face frame to the side panel.

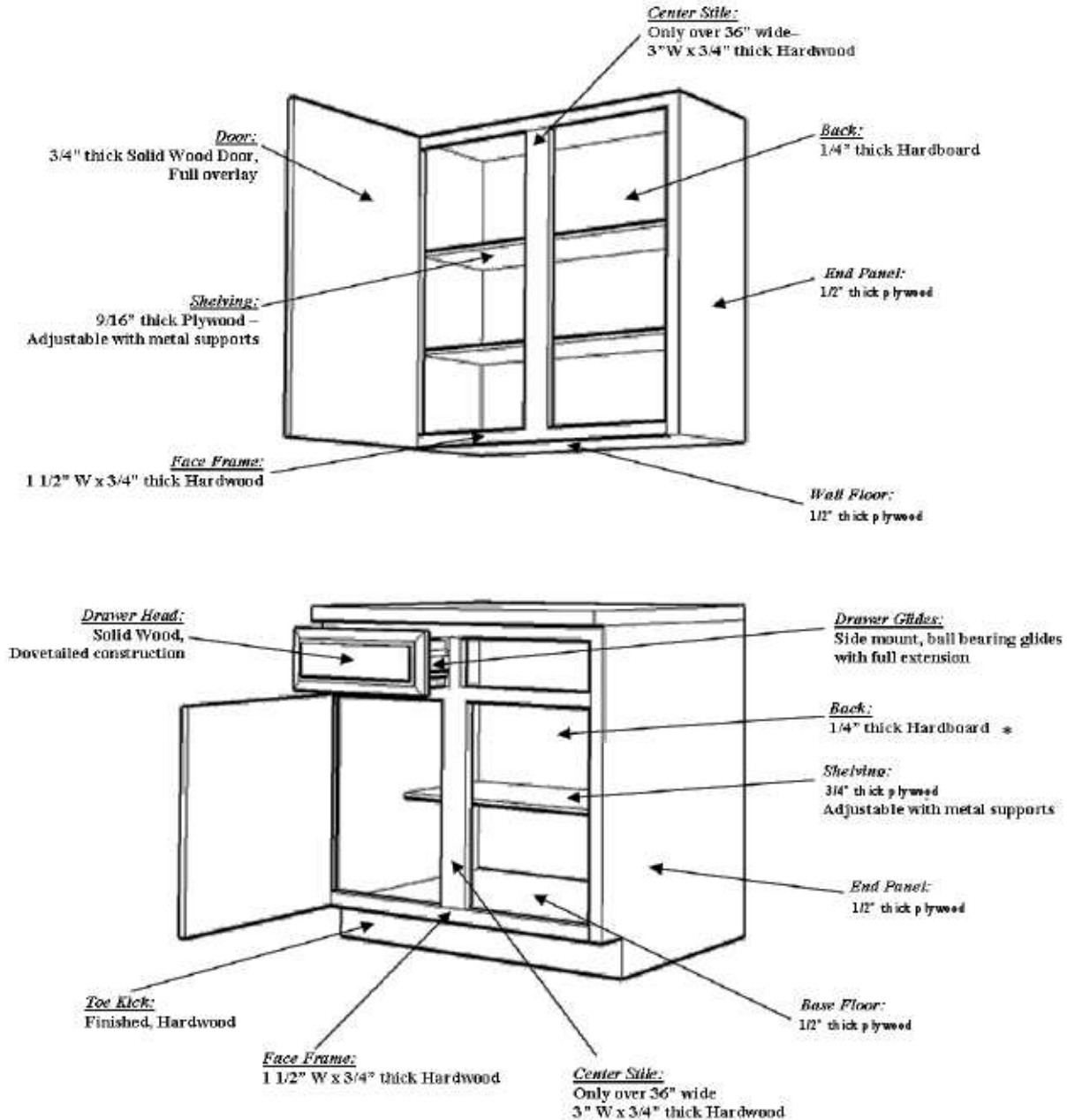




Cabinet Specifications

Bristol Series

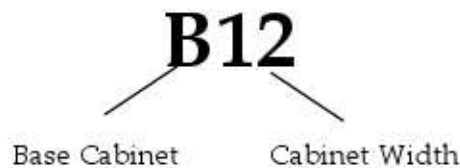
Cabinet Construction Specifications



* All four corners of the base cabinets are secured with wooden block screwed into each end panel at a 45 degree angle for support and mounting of a countertop. In addition a panel beam is glued and fastened into the dovetail groove at the top of each base cabinet to ensure a straight fully integrated side.

* Bristol Cherry and Bristol Oatmeal have 1/2" backs

Understanding Our Cabinet Guide



A few basics about cabinet dimensions:

Wall cabinet widths and heights range from 9" to 42" and increase in 3 inch increments.

Base cabinets are 34.5" high and range in width from 9" to 42" increasing in 3 inch increments. Each base cabinet has a toe kick area.

Tall cabinets are usually 84", 90", or 96" high, 24" deep and range from 15" to 36" wide. They include a toe kick area.



Product Guide

WALL CABINETS

Wall Cabinet– Single Door

30" H

2 adjustable shelves
Note R or L swing



- W930
- W1230
- W1530
- W1830
- W2130
- W2430

Wall Cabinet– Double Door

30" H

2 Adjustable Shelves

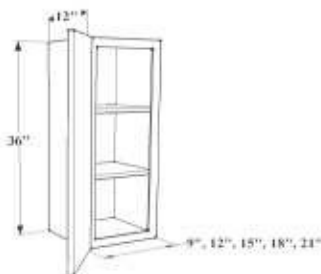


- W2730
- W3030
- W3330
- W3630
- W3930
- W4230

Wall Cabinet– Single Door

36" H

2 adjustable shelves
Note R or L swing



- W936
- W1236
- W1536
- W1836
- W2136
- W2436

Wall Cabinet– Double Door

36" H

2 adjustable shelves



- W2736
- W3036
- W3336
- W3636
- W3936
- W4236

Wall Cabinet– Single Door

42" H

3 adjustable shelves
Note R or L swing



- W942
- W1242
- W1542
- W1842
- W2142
- W2442

Wall Cabinet– Double Door

42" H

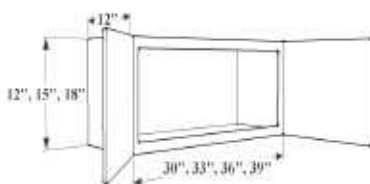
3 adjustable shelves



- W2742
- W3042
- W3342
- W3642
- W3942
- W4242

Wall Cabinet– Double Door

12", 15", 18" H



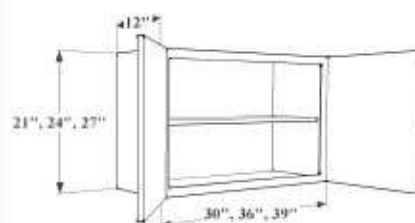
No adjustable shelf

- W3012
- W3312
- W3612
- W3912
- W3015
- W3615
- W3915
- W3018
- W3618
- W3918

Wall Cabinet– Double Door

21", 24", 27" H

1 adjustable shelf



- W3021
- W3024
- W3624
- W3924
- W3027

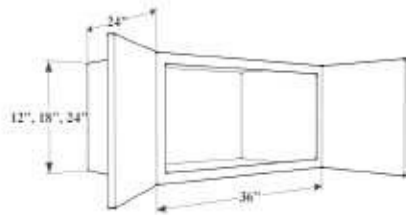
Professionally Crafted Cabinets

WALL CABINETS

Refrigerator Wall Cabinet

12", 18", 24" H

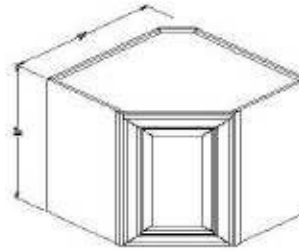
1 adjustable shelf (24")
No shelf (12", 18")



- W3612
- W3615
- W3618
- W3624

Diagonal Appliance Garage

18" H

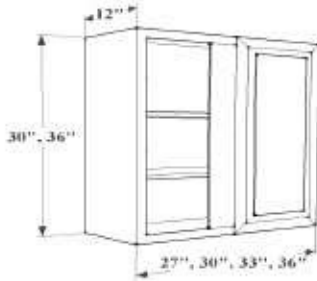


- WDC2418

Wall Blind Corner- Single Door

30", 36" H

2 adjustable shelves
Note R or L swing



- WBC3030
- WBC3036
- WBC3630
- WBC3636

Wall Blind Corner- Single Door

42" H

-3 adjustable shelves
-Note R or L swing

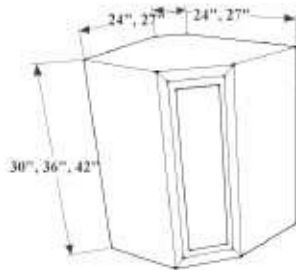


- WBC3042
- WBC3642

Wall Corner Cabinet- Single Door

30", 36", 42" H

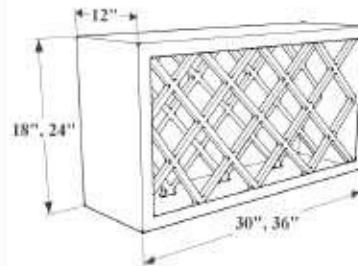
3 adjustable shelves
Note R or L swing



- WDC2430
- WDC2436
- WDC2442
- WDC2730
- WDC2736
- WDC2742

Wall Wine Rack Cabinet

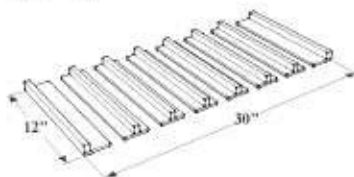
15" H



- WR3015
- WR3615

Wall Stem Glass Holder

30" W



- SGH30
- SGH36

Wall Plate Rack Cabinet

15" H



- PR30
- PR36



Product Guide

Wall Glass Door– Standard

30", 36", 42" H



-Add -GD to end of any wall cabinet SKU to indicate standard glass

Standard doors will be cut to create frame for glass.

Wall Glass Door– Mullion

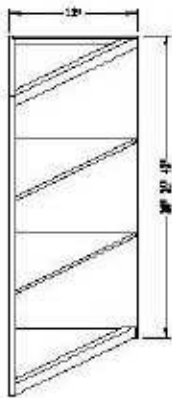
30"



- Available in Victorian GMD 1530

Angled Shelf

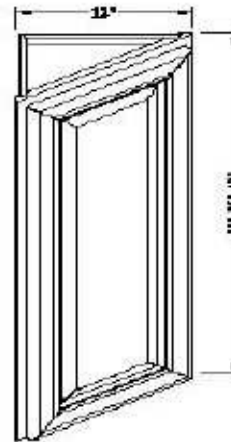
30", 36", 42" H



- AWS1230
- AWS1236
- AWS1242

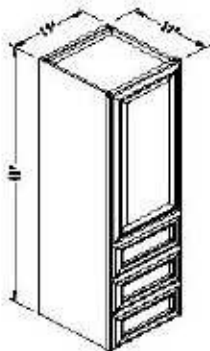
Angled Cabinet

30", 36", 42" H



- WAE1230
- WAE1236
- WAE1242

Wall Cabinet , 3 Drawer



- W3D1548

WALL CABINETS

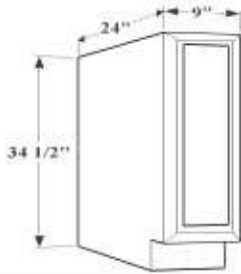
Professionally Crafted Cabinets

BASE CABINETS

Full Height Door Base Cabinet

34 1/2" H

1 adjustable shelf
Note R or L swing

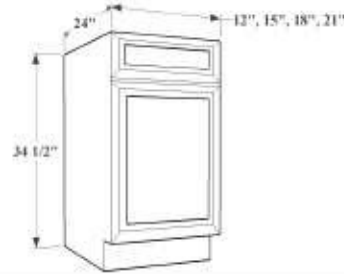


■ TB9

Single Door/Drawer Base Cabinet

34 1/2" H

1 adjustable shelf
Note R or L swing

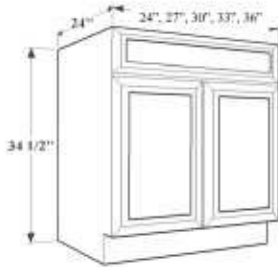


■ B12
■ B15
■ B18
■ B21

2 Door/1 Drawer Base Cabinet

34 1/2" H

One drawer
1 adjustable shelf

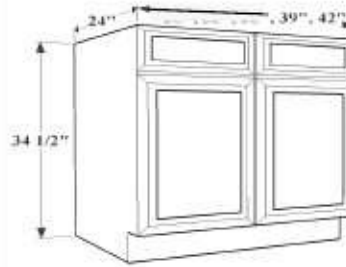


■ B24
■ B27
■ B30
■ B33
■ B36

2 Door/2 Drawer Base Cabinet

34 1/2" H

Two drawers
1 adjustable shelf



■ B39
■ B42

3 Drawer Base Cabinet

34 1/2" H

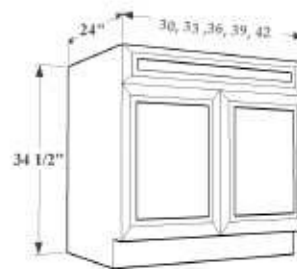


■ 3DB12
■ 3DB15
■ 3DB18
■ 3DB21
■ 3DB24
■ 3DB27
■ 3DB30
■ 3DB36

Sink Base Cabinet—Double Door

34 1/2" H

Top fixed panel
No adjustable shelves

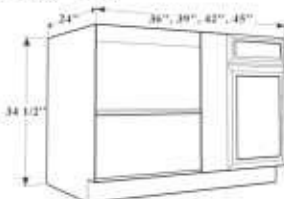


■ SB30
■ SB33
■ SB36
■ SB39
■ SB42

Blind Corner Base Cabinet

34 1/2" H

1 adjustable shelf
Note R or L swing



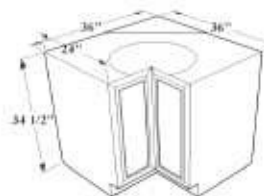
■ BLB36
■ BLB39
■ BLB42
■ BLB45

Must Be pulled a Minimum of 3"
May necessary to pull farther to
allow for hardware clearance

Lazy Susan Base Cabinet

34 1/2" H

Two tier shelf



■ LSB33
■ LSB36



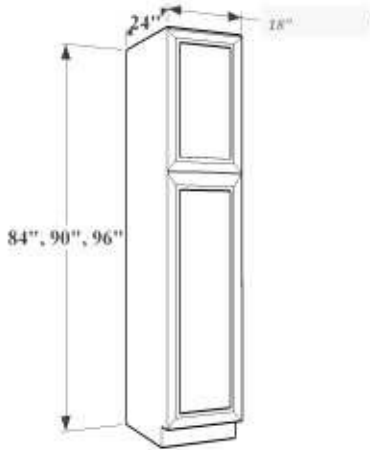
Product Guide

BASE CABINETS

Tall Utility Cabinet– Single Door

84", 90", 96" H

Top– 1 adjustable shelf
Bottom– 3 adjustable

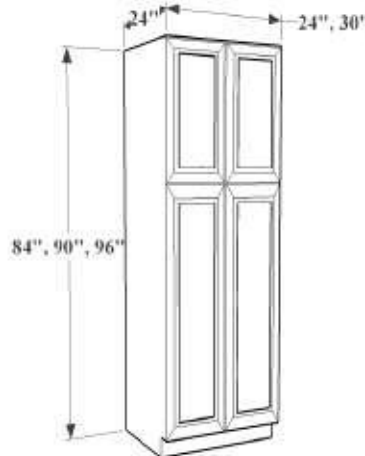


- UC188424
- UC189024
- UC189624

Tall Utility Cabinet– Double Door

84", 90", 96" H

Top– 1 adjustable shelf
Bottom– 3 adjustable shelves

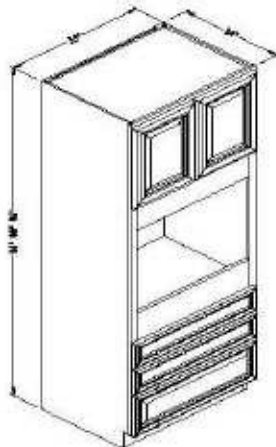


- 2UC248424
- 2UC249024
- 2UC249624
- 2UC308424
- 2UC309024
- 2UC309624

Single Oven Cabinet

84", 90", 96" H

No adjustable shelf



- OC338424
- OC339024
- OC339624

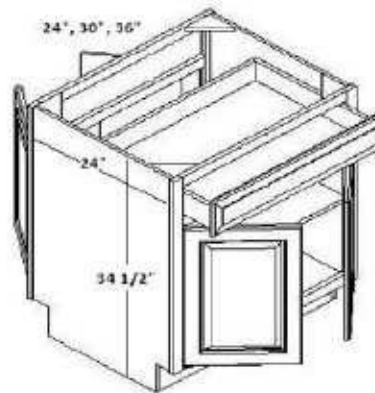
2– 6 1/2" Drawers
1– 10" Drawer

Opening Size:
27 wide x 19 Tall

*For double oven remove the two 6 1/2" Drawers

Peninsula Base

34 1/2" H



- PB24
- PB30
- PB36

1 adjustable shelf

Professionally Crafted Cabinets

VANITY CABINETS

Vanity Sink Cabinet— Single Door

34 1/2" H

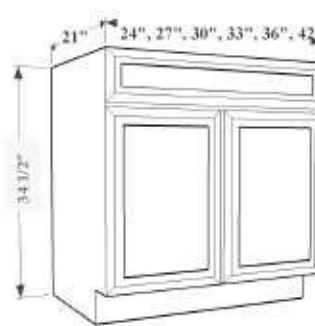


No adjustable shelf
Top panel is fixed

■ VS21

Vanity Sink Cabinet— Double Door

34 1/2" H

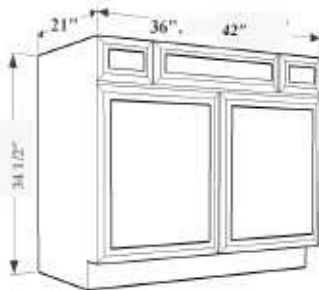


No adjustable shelf
Top fixed panel

- VS24BD
- VS27BD
- VS30BD
- VS33BD
- VS36BD
- VS42BD

Vanity Sink Console

34 1/2" H



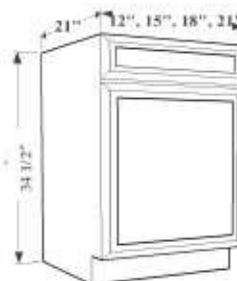
No adjustable shelf
Top fixed panel with
two small drawers

- VSD36"
- VSD42

*Note Only Coffee Has Two small
Drawers, Oakmeal and Cherry have
fix panel

Vanity Base— Single Door/Drawer

34 1/2" H

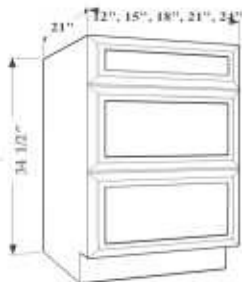


1 adjustable shelf

- VB12
- VB15
- VB18
- VB21

Vanity 3 Drawer Base Cabinet

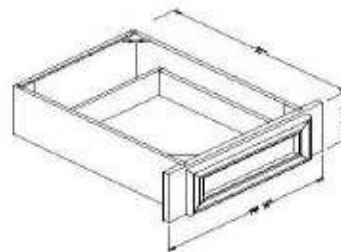
34 1/2" H



- VDB12
- VDB15
- VDB18
- VDB21
- VDB24

Knee Drawer

Specs: 7 1/4" Tall, 21" Deep

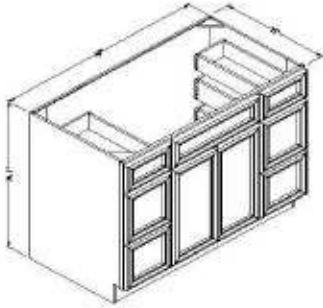


- KD30
- KD36



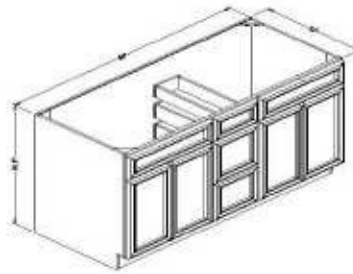
Product Guide

Vanity Sink Cabinet
34 1/2" H



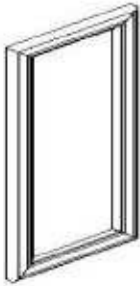
■ VSD 48

Vanity Sink Cabinet
34 1/2" H



■ VSD60

Accessories
Decorative Door



■ WDD1230
■ WDD1236
■ WDD1242

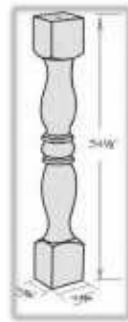
Accessories
Tall Decorative Door



■ TDD2484
■ TDD2490
■ TDD2496

Accessories

Decorative Post

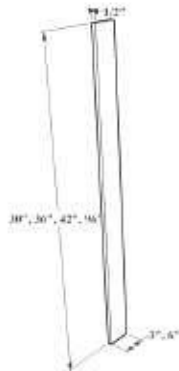


■ PST

VANITY CABINETS

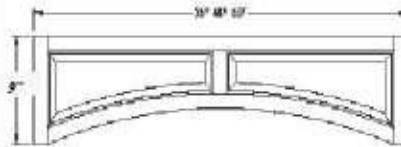
Professionally Crafted Cabinets

Filler 3", 6"



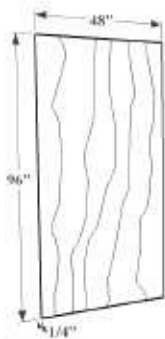
- F330
- F336
- F342
- F630
- F636
- F642
- F696

Arch Valance/Apron



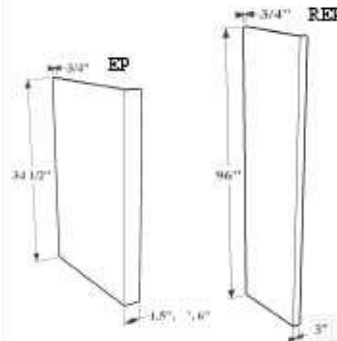
- VAR36
- VAR48
- VAR60
-

Finished Panel- Plain



- FBP4896.25**

End Panel- Base, Wall, Refrigerator



Available in Fluted

- EP1.5
- EP3
- REP384
- REP390
- REP396

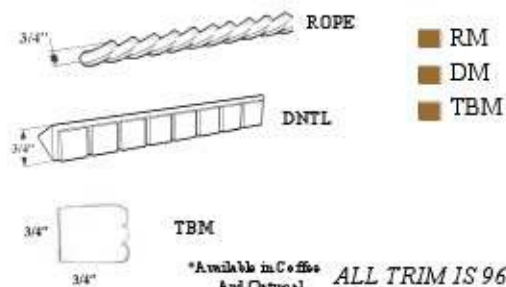
REPs flush not available in Outrinal at this time

Crown Molding- Standard, Inset



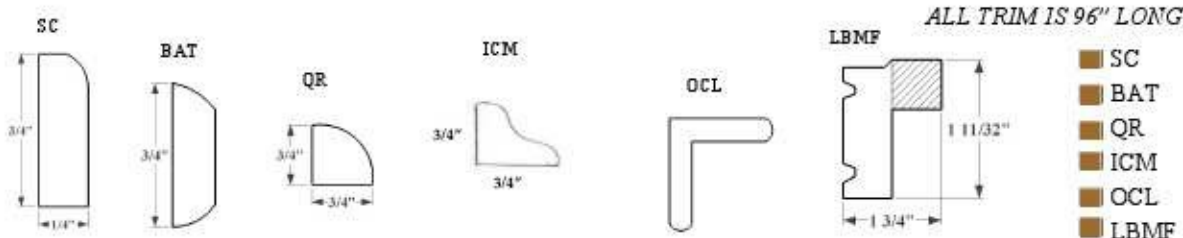
ALL TRIM IS 96" LONG

Moldings- Rope, Dentil



*Available in Coffin And Outrinal ALL TRIM IS 96" LONG

Finish Molding- Scribe, Batten, Quarter, Furniture Base, Outside Corner, Light Rail



ALL TRIM IS 96" LONG



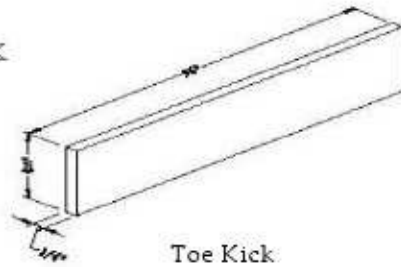
Product Guide



FBM

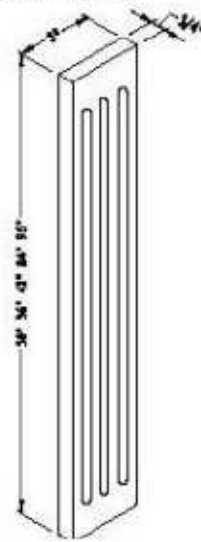
Specs: 4" X 96" x 1/4"

TK



Toe Kick

Fluted Filler 3", 6"



- FF330
- FF336
- FF342
- FF384
- FF390
- FF396

- FF684
- FF690
- FF696



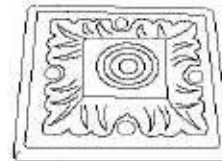
Corbel- Traditional – CGS



Corbel-Grapes – CST



Medallion Onlay – ONL-MDLN



■ ROST

3" x 3"



Tradition Onlay – ONL-TRD

ACCESSORIES